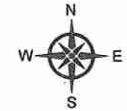
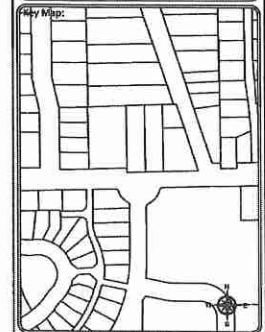


RECEIVED AND PROCESSED
BY LAND DEVELOPMENT
INITIALS _____
APR 03 2017

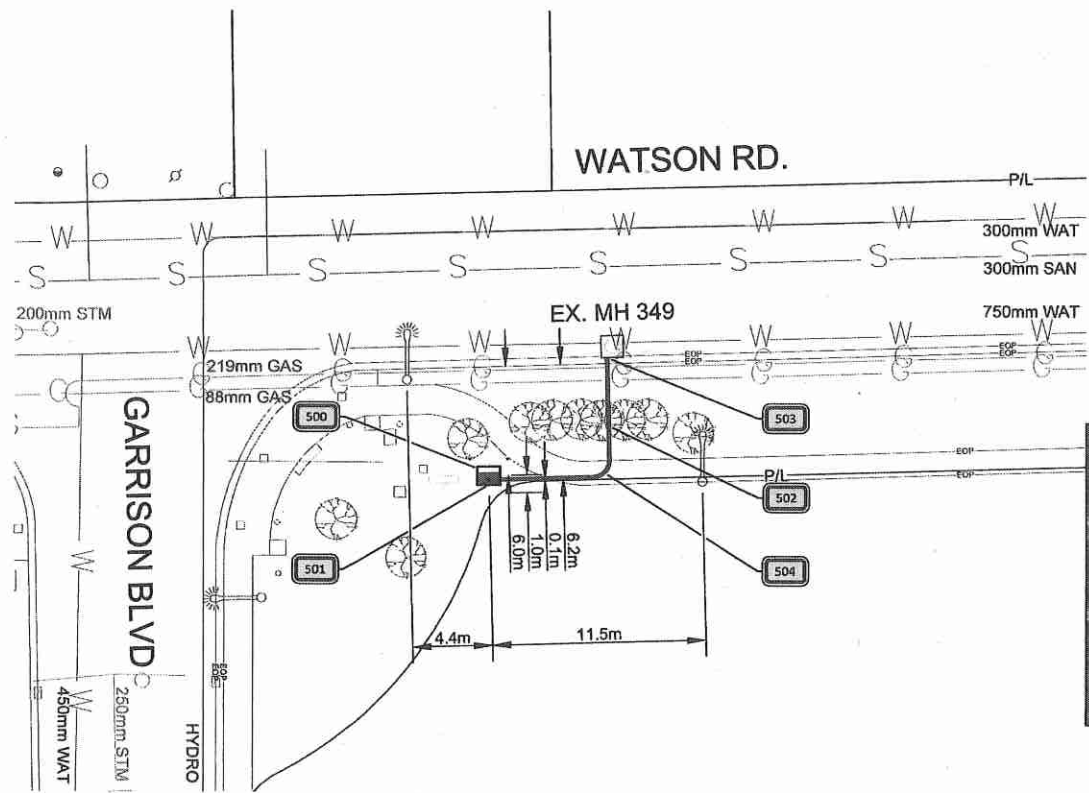


Sheet Title:
Design
Function: Make ready Task: FDH Placement

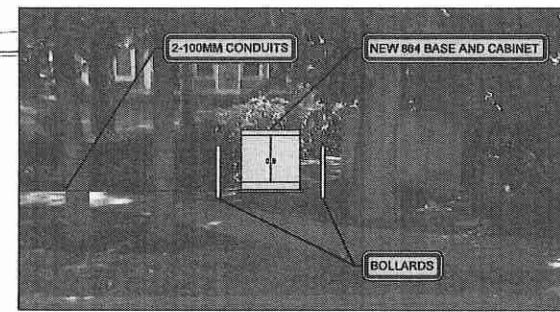


NOTES:

500	INSTALL 284F FDH ON CONCRETE PAD WITH 2x BOLLARDS. SEE DETAIL 'C' SHEET 600
501	STUB 2-100mm DUCTS 0.5m ABOVE FINISHED GRADE
502	INSTALL (2) 100mm DBII PVC CONDUIT L= 14.0 m. SEE DETAIL 'B' SHEET 600
503	CORE FOR 2-100mm CONDUIT IN TELUS MH-349 SEE DETAIL 'A' SHEET 600
504	NEW 90° BEND 2-100mm DBII PVC CONDUIT



PLAN VIEW
HORIZONTAL SCALE: 1 : 250



45550 SHAWNIGAN CRES
FDH - SITE PLAN
N.T.S.

CAUTION:
GAS FACILITIES IN AREA
LOCATE AND EXPOSE
PRIOR TO COMMENCING WORK

METHOD OF PLACEMENT
VIA OPEN TRENCH UNLESS
OTHERWISE NOTED

LOCATE AND PROTECT ALL
OTHER UTILITIES IN FIELD

ALL MEASUREMENTS ARE IN
METERS UNLESS NOTED

BC ONE CALL
CALL BEFORE YOU DIG
1-800-495-5858
OR BY CALLING 800
VICTORIA AREA 800-660-1000
CALL AT LEAST TWO WEEKS BEFORE
START OF WORK TO GET

Client: TELUS

Prepared By: FAFL
SUITE 200 - 7485 130 ST
Surrey BC V3W 1H8

Rev	Date	Notes	QC
-	-	-	-
-	-	-	-
-	-	-	-
-	-	-	-

IFP: MARCH 14TH 2017
DRAWN BY: JFC, APR 10 2017
DESIGNED BY: KADTEC SYSTEMS

Proprietary Information
Not for disclosure except under written agreement

Scale = 1:250
0 2.5 5.0 7.5 10.0

Project: Falcon 2017
SRDS 3061A - 2626729
Sardis, BC

File Name:
COID Route
SRDS 3061A
Network Number Sheet Number
2626729 600

Date: May 10, 2017 Author: Jacqueline Burry 604-961-8064 Universal Flagging: 170-8061 Lougheed Hwy, Burnaby, BC V5A 1W9
 Office: 604-444-3732 Dwg: 001

Comments:

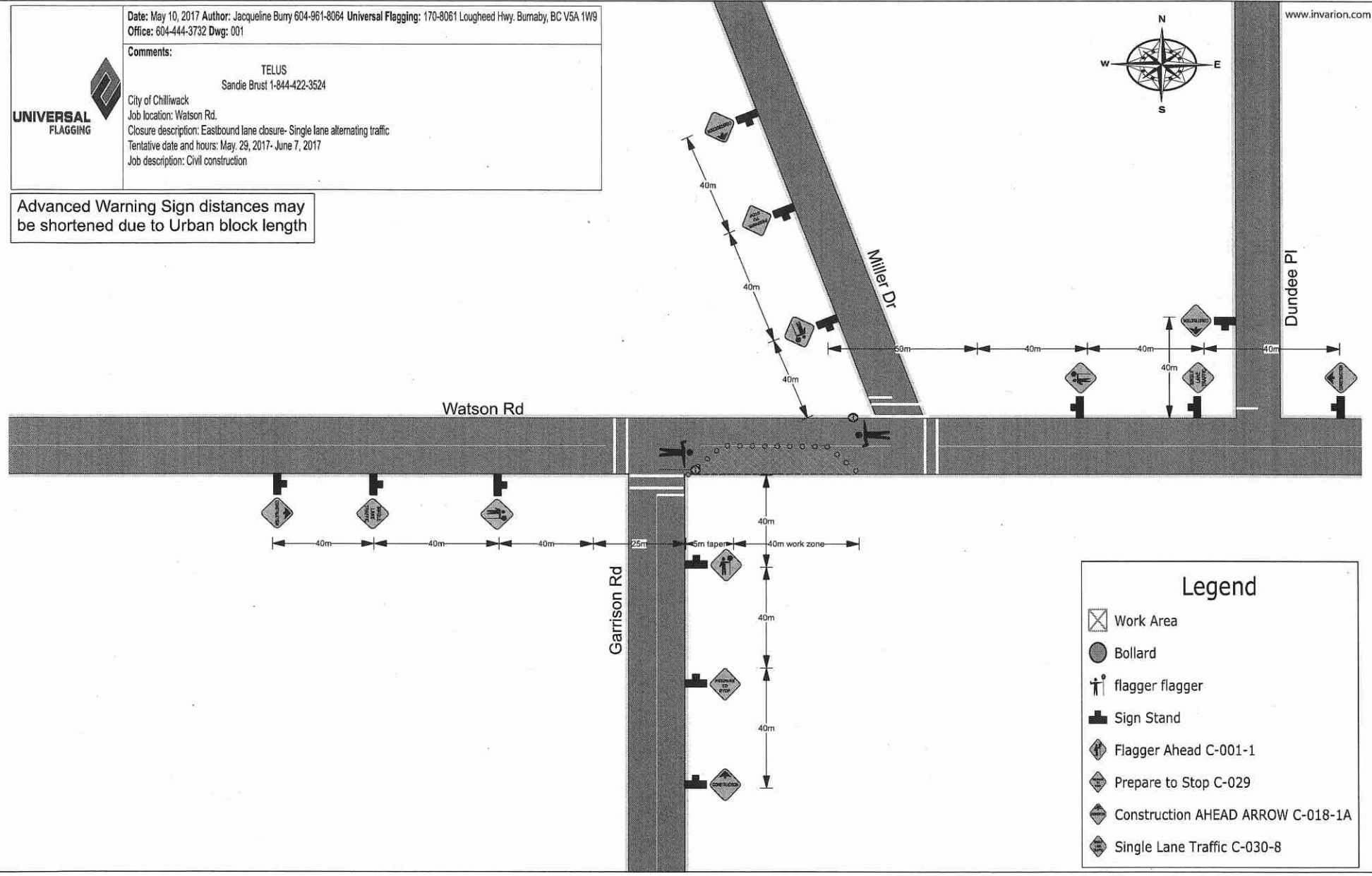
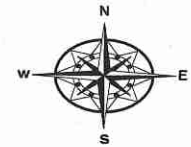
City of Chilliwack
 Job location: Watson Rd.
 Closure description: Eastbound lane closure- Single lane alternating traffic
 Tentative date and hours: May 29, 2017- June 7, 2017
 Job description: Civil construction



TELUS
 Sandie Brust 1-844-422-3524

Advanced Warning Sign distances may be shortened due to Urban block length

www.invarion.com



Legend

- Work Area
- Bollard
- flagger flagger
- Sign Stand
- Flagger Ahead C-001-1
- Prepare to Stop C-029
- Construction Ahead Arrow C-018-1A
- Single Lane Traffic C-030-8